

Indicators for Health Promotion in Hospitals

Hanne Tønnesen

Bispebjerg Hospital, Denmark



Background

Quality assessment is part of the clinical routine at most hospitals

WHO standards for Hp in hospitals

Tobacco and alcohol have been in focus at Bispebjerg Hospital since 2001



Systematic approach

- Clinical guidelines
 - Documentation
 - Standards and indicators
-
- Screening, identification, information and recommendation
 - Motivational counselling
 - Admission to stop smoking / drinking program



Purpose

To monitor implementation of

- stop smoking programs
- alcohol intervention

for in- and out-patients



Methods

- Clinical guidelines with related indicators and registration forms
 - Developed in 2000
 - Approved by the quality committee in 2001
 - Minor adjustments every year afterwards
- Effect of smoking intervention is measured in the national clinical database (no database for alcohol)



Methods II

- Internal audits
 - 2-3 times per year
 - All clinical departments (20 medical records from each)
 - Including indicators for tobacco and alcohol
 - Reporting to the quality committee
 - Adjustment according to the results



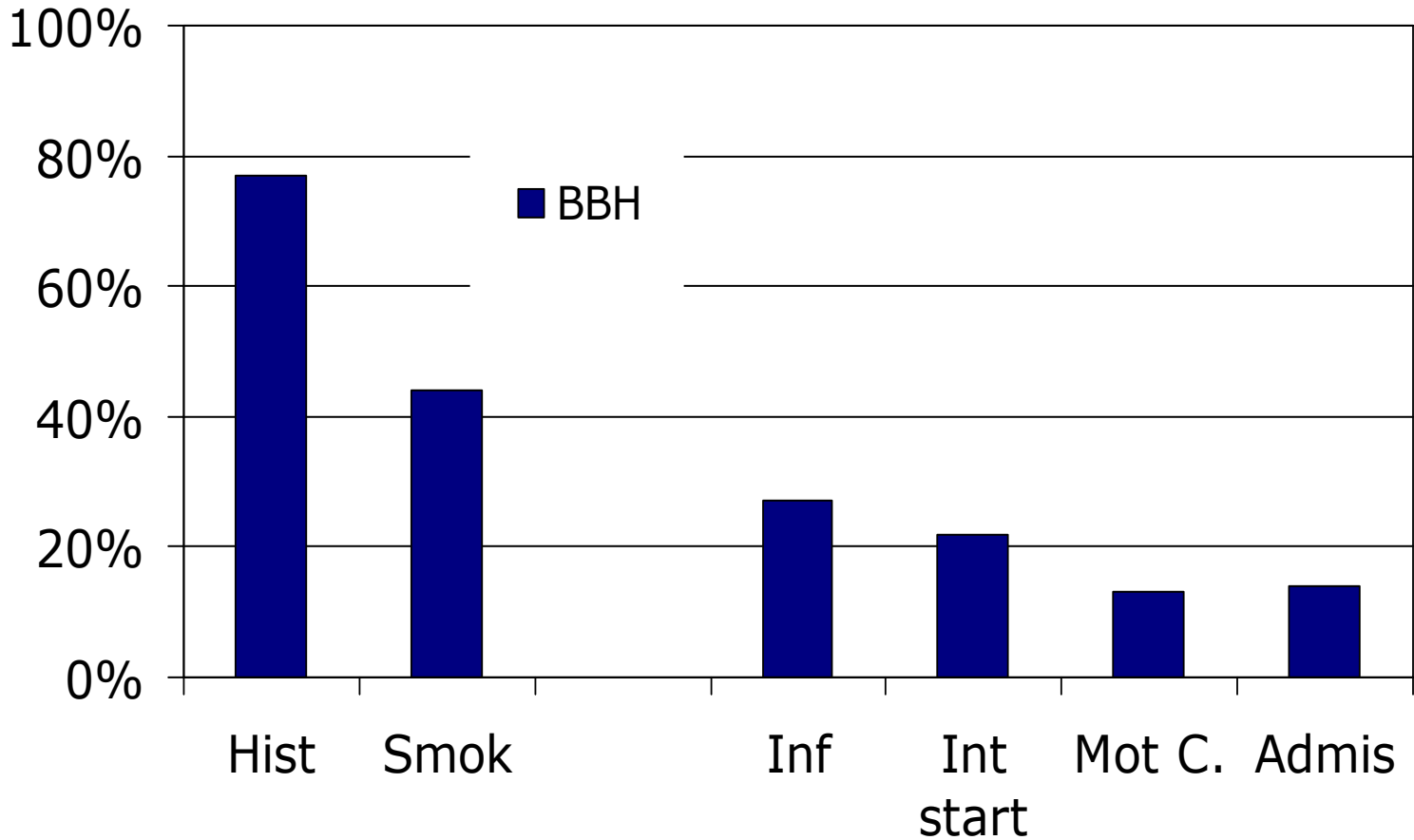
Indicators: Smoking (yes/no)

- History of tobacco use in the record ?
 - Daily smoking ?
-

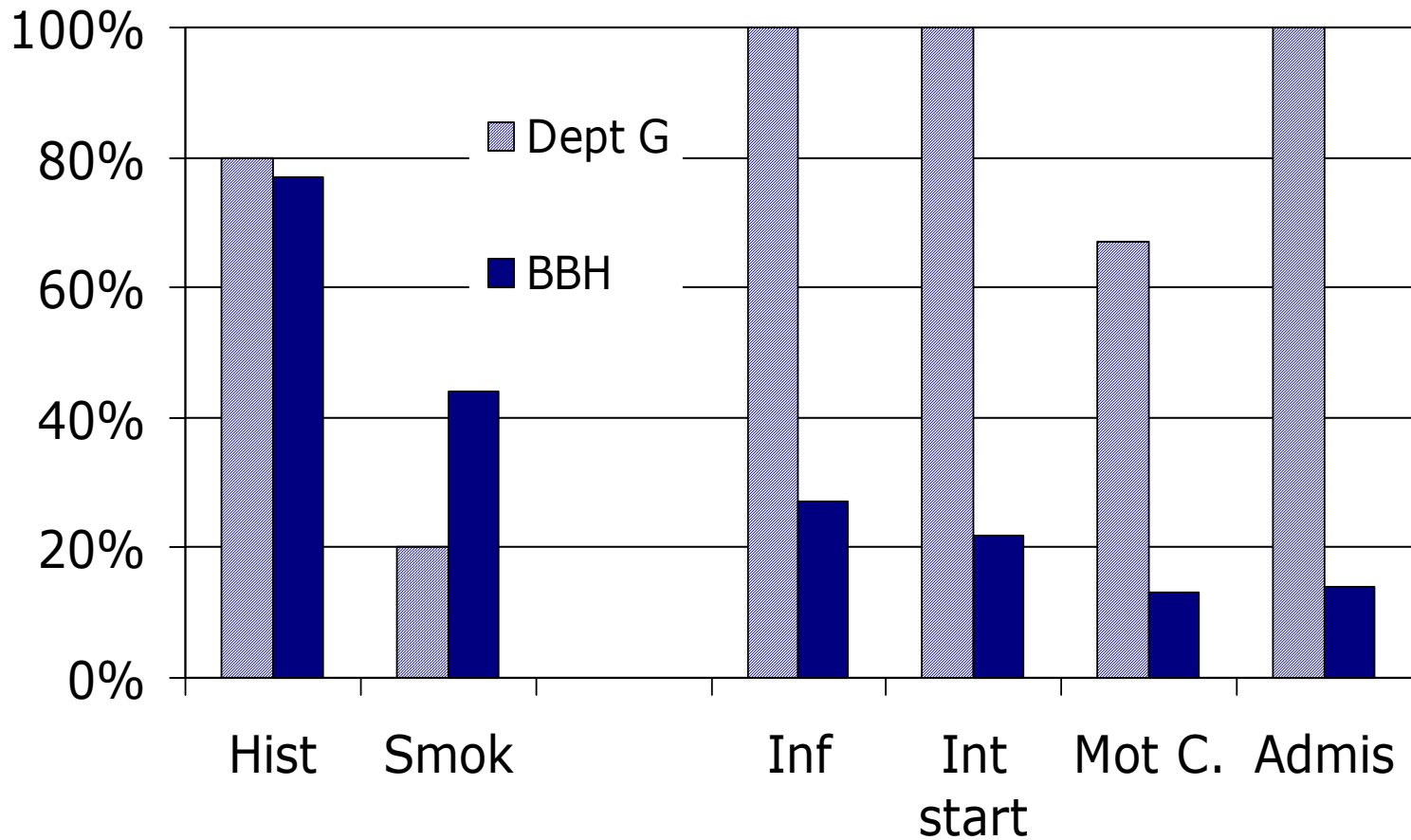
- Information given regarding relation to symptoms, diagnosis, treatment and prognosis ?
- Intervention started according to the clinical guidelines ?
- **Motivational counselling**
- Admission to stop smoking program



Indicators: Smoking (yes/no)

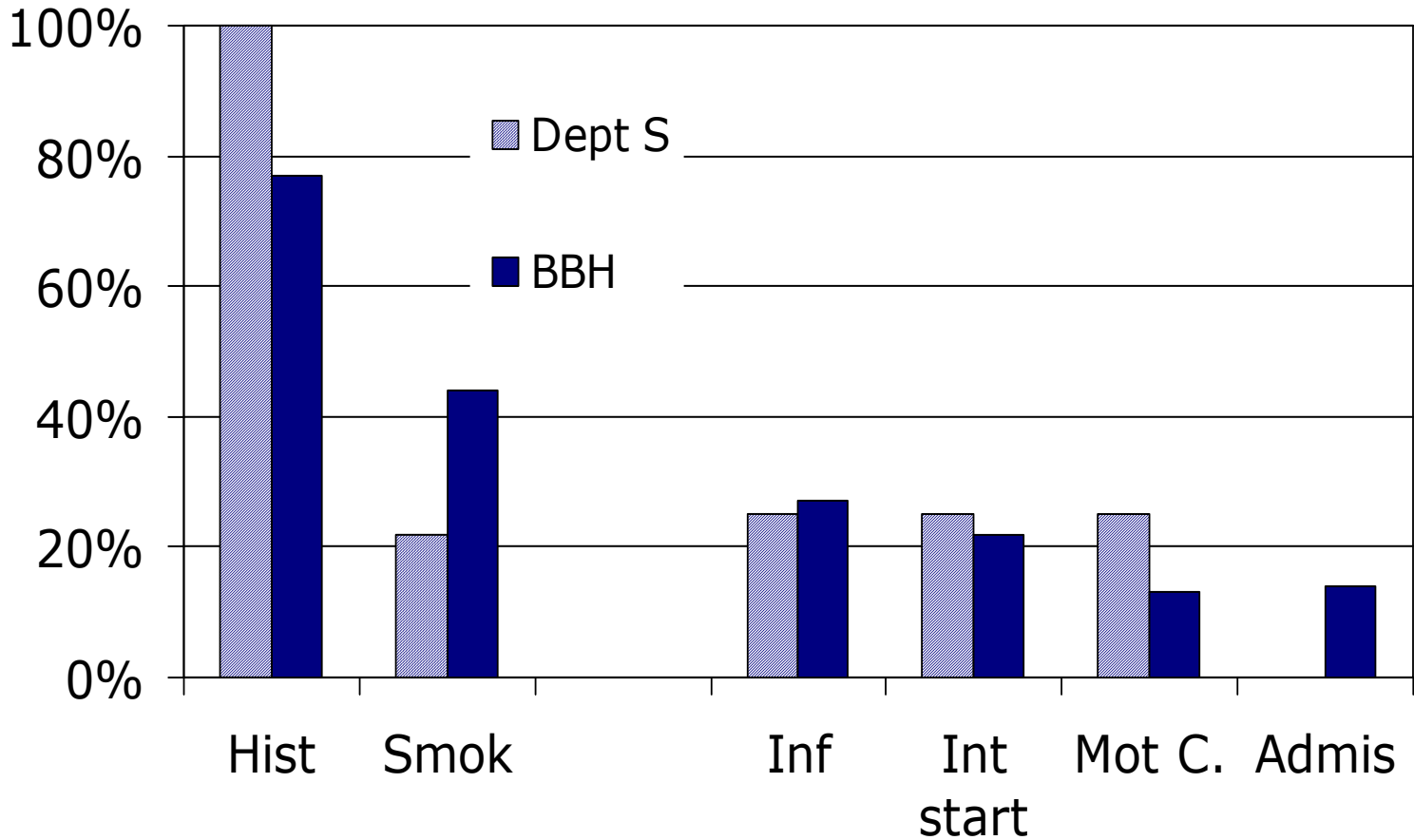


Indicators: Smoking (yes/no)



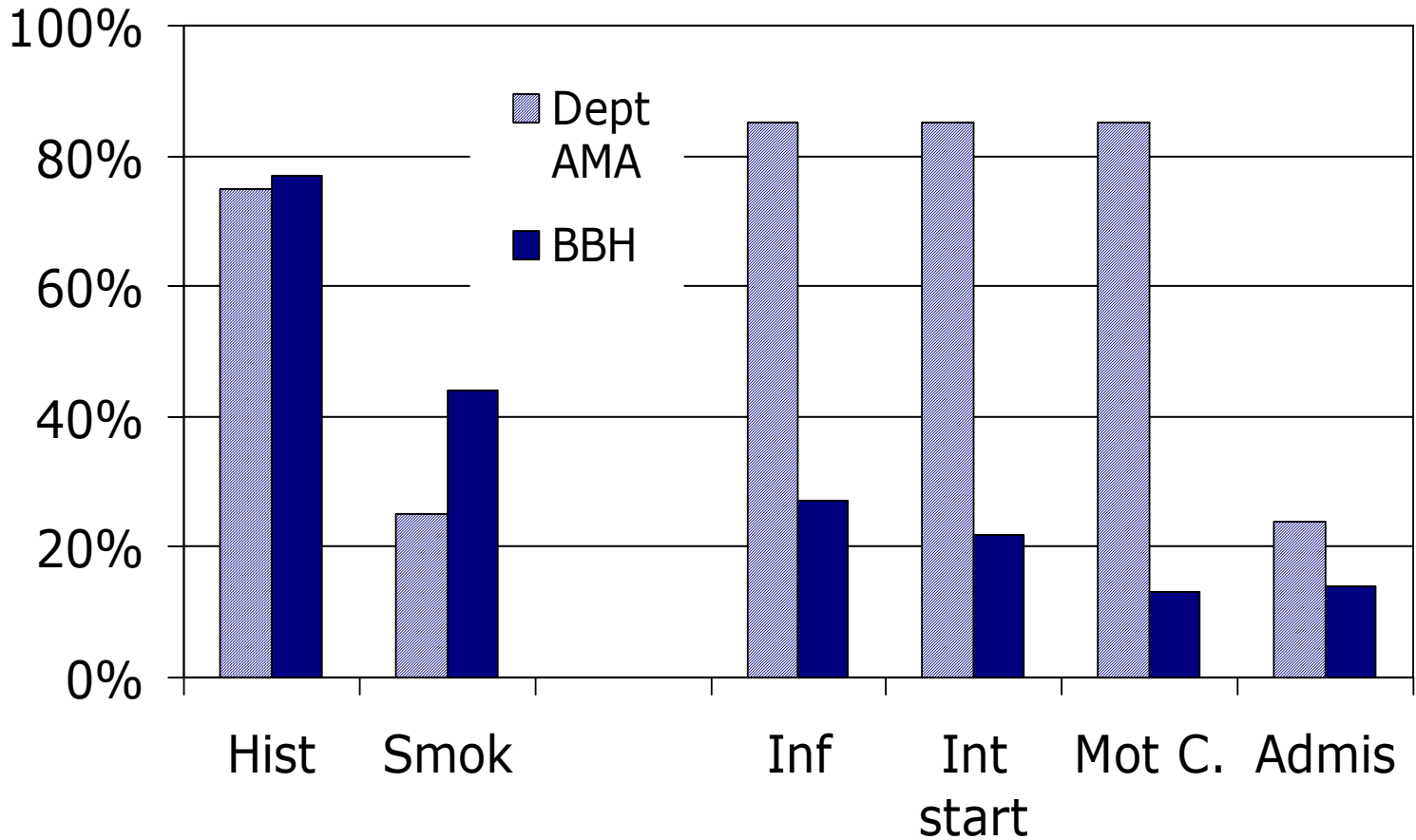


Indicators: Smoking (yes/no)





Indicators: Smoking (yes/no)



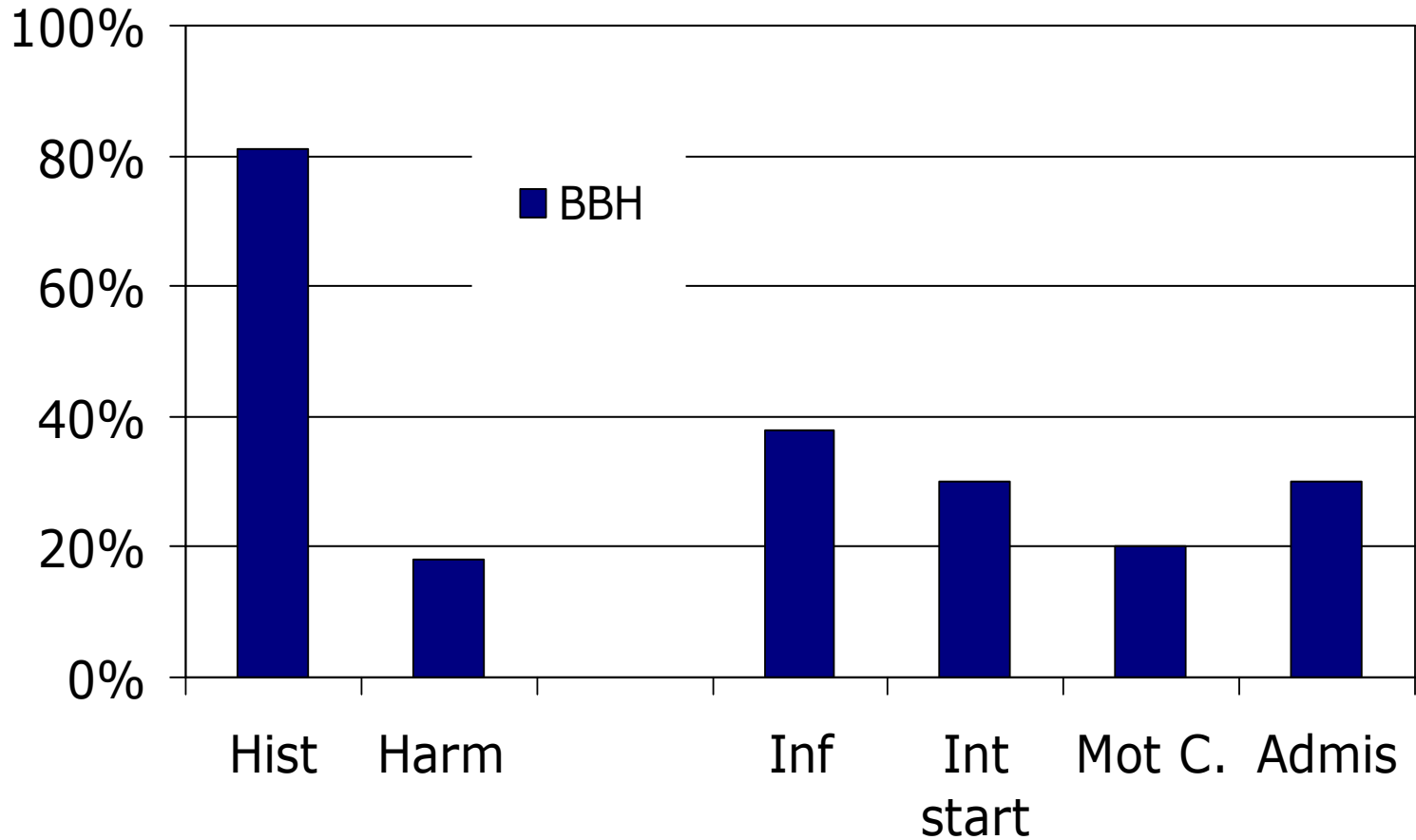
Indicators: Alcohol (yes/no)

- History of alcohol use in the record ?
 - Drinking more than 21 and 14 drinks / week for men and women, respectively ?
-

- Information given regarding relation to symptoms, diagnosis, treatment and prognosis ?
- Intervention started according to the clinical guidelines ?
- **Motivational counselling**
- Admission to alcohol intervention program

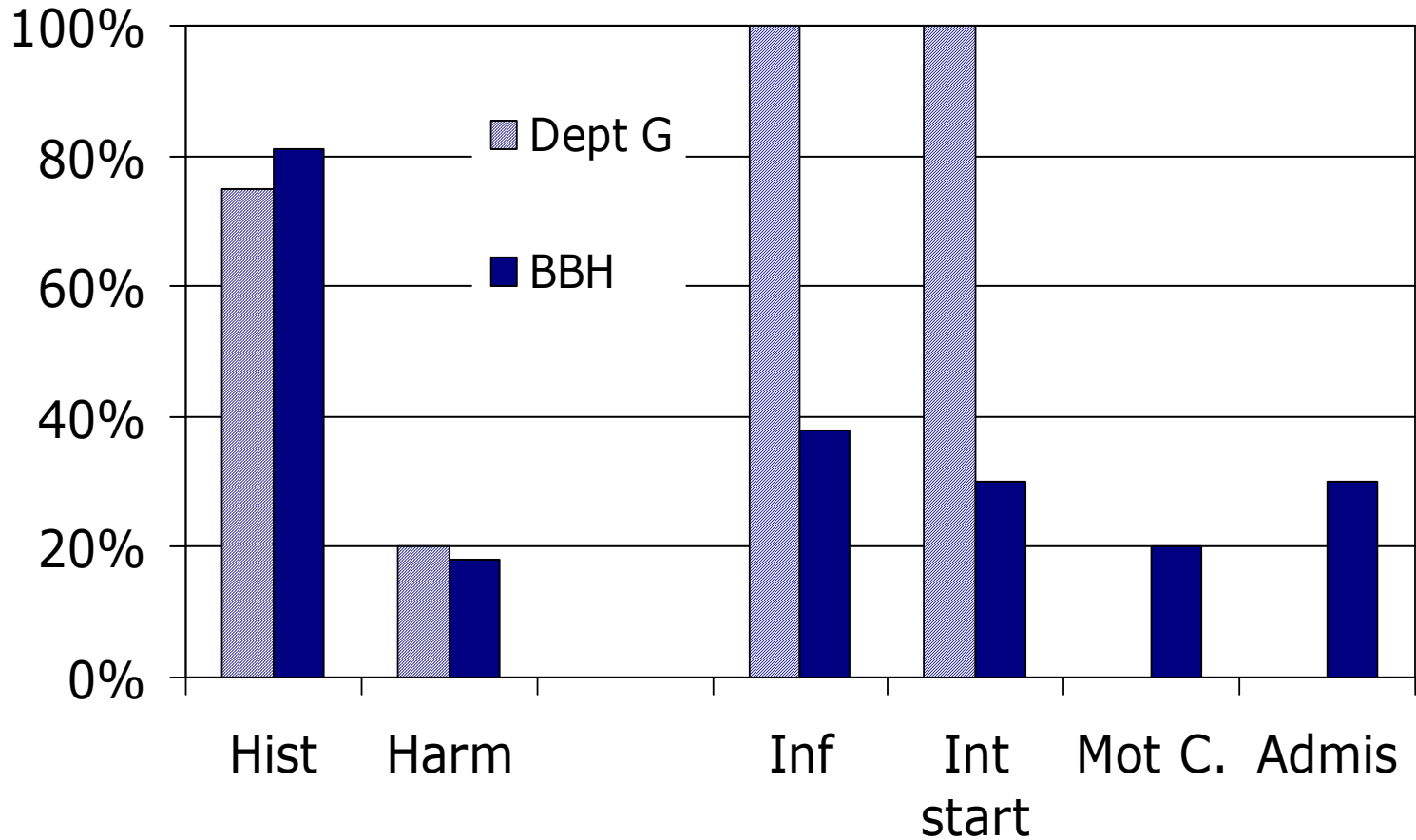


Indicators: Alcohol (yes/no)

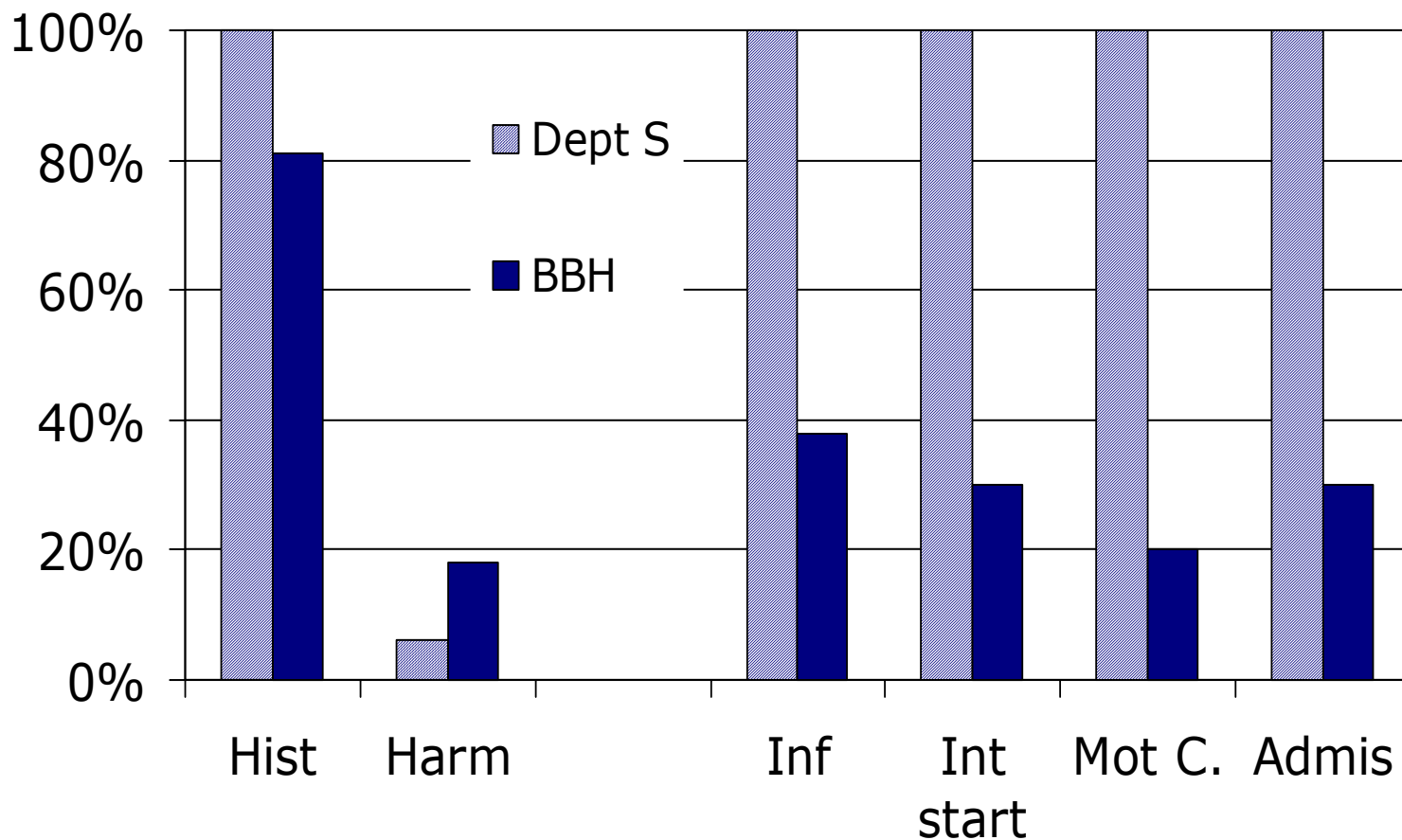




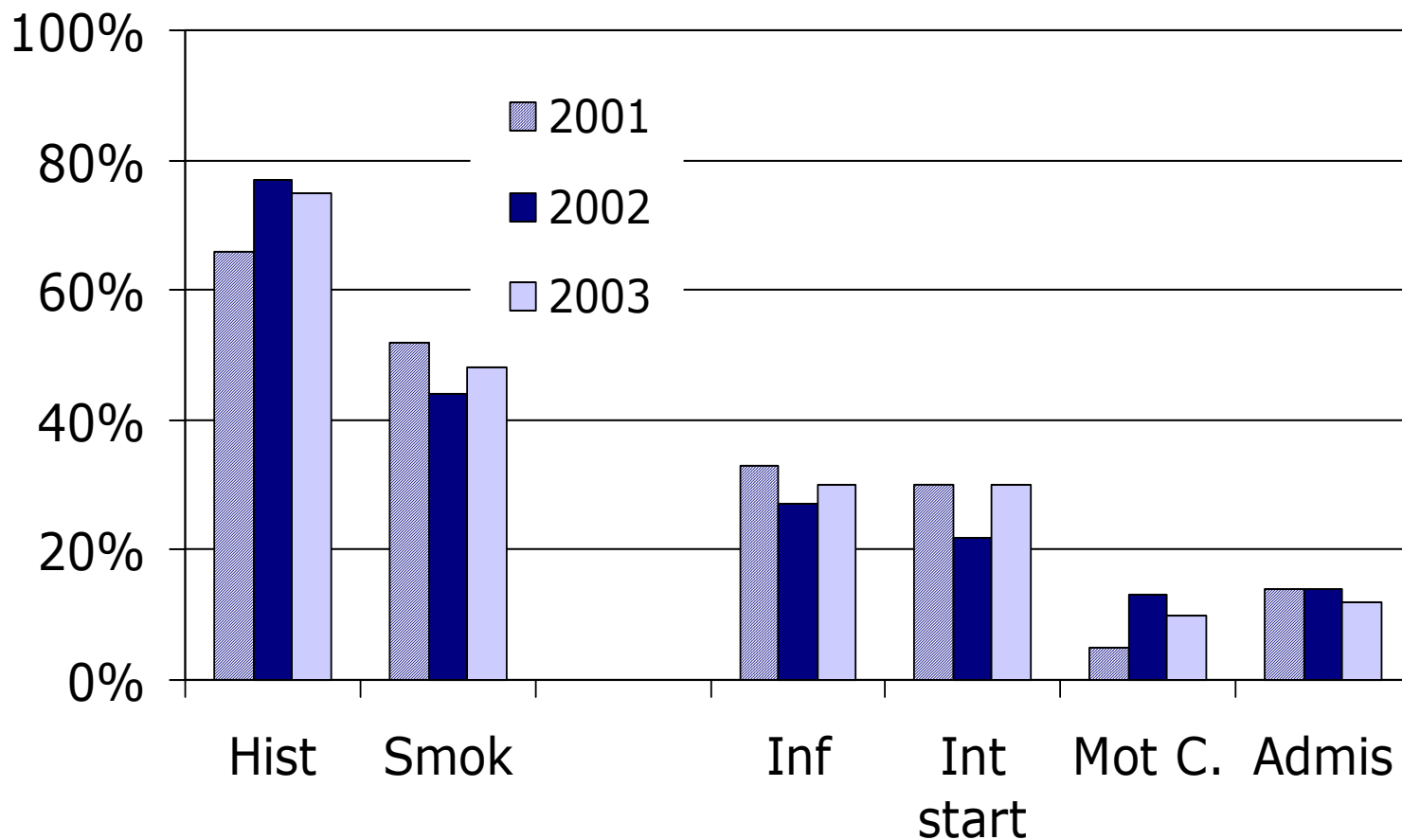
Indicators: Alcohol (yes/no)



Indicators: Alcohol (yes/no)

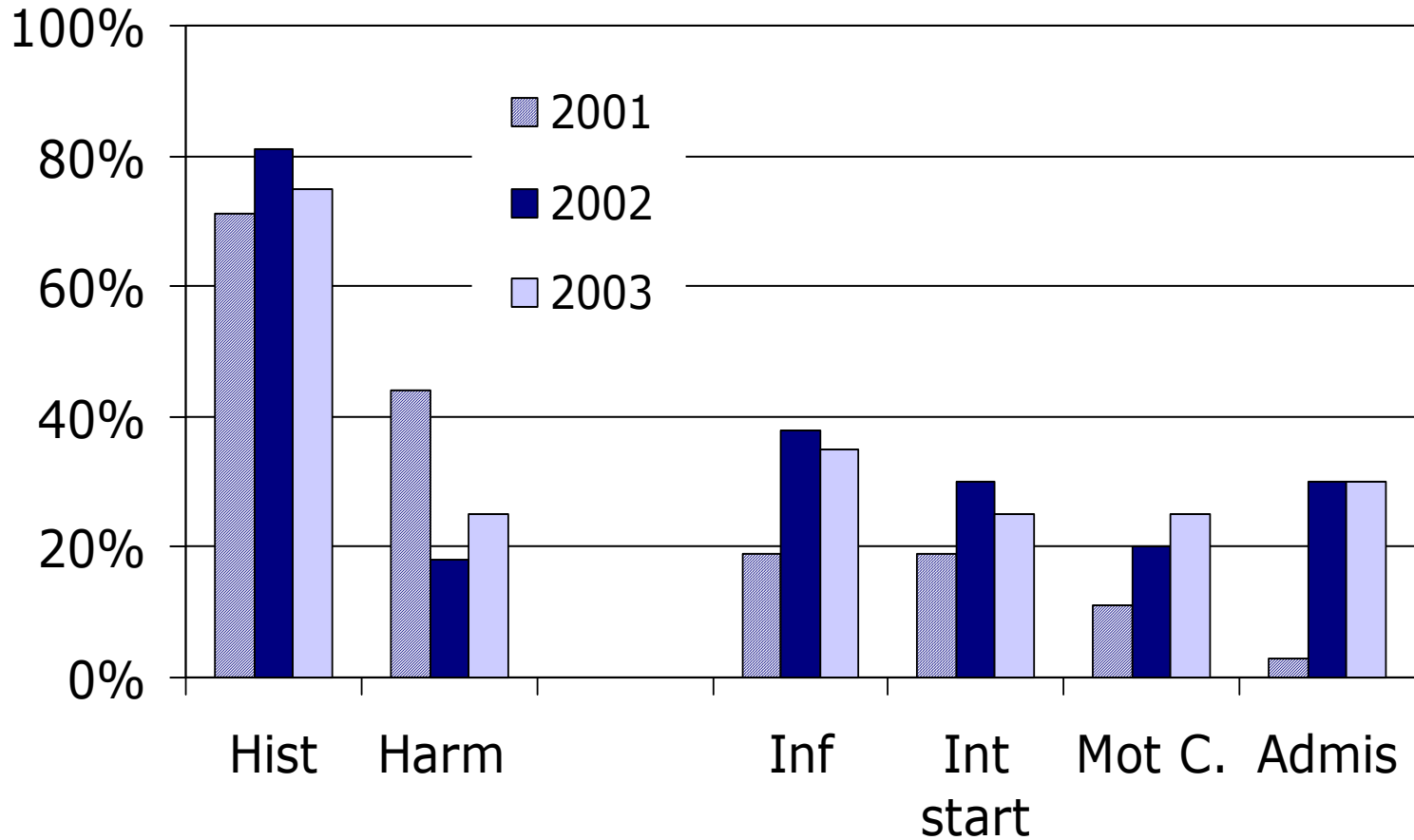


Smoking over time





Alcohol over time





Conclusion

- Variation over time related to
 - Small number of medical records (by chance)
 - Differences in characteristics of the patients
 - Differences in activity
- Clinical indicators for HP can be
 - Implemented in the quality assessment at the hospital
 - Used for monitoring
- We have plenty of room for improvement