



**Clinical Unit of Health Promotion**

WHO Collaborating Centre  
for Evidence-Based Health Promotion in Hospitals



# Health promotion in hospitals and DRG System

**Hanne Tønnesen**

Bispebjerg Hospital, Denmark

HPH 2004

# Working group: Handling HP and DRGs

## Danish Network of HPH

- **Hobro Terndrup Sygehus:** Kent Dencker Christensen
- **RAS Køge:** Henri Goldstein
- **Sygehus Fyn:** Anne Sorknæs and Lars Tougaard
- **Centralsygehus Esbjerg-Varde:** Inge Lise Christensen
- **Bispebjerg Hospital:** Ann-Dorthe Zwisler
- **Network secretary:** Coordinator Lillian Møller

## Ministry of Health & National Board of Health

- Nina Schmidt Petersen

## Danish Institute of Health Services Research

- Anders Rud Svenning

## Clinical Unit of Health Promotion

- Vibeke Thygesen and Hanne Tønnesen





# Background

HP services are nearly invisible in:

- Budgets and Balances
- Registration of health care services
- Databases of outcome

Documentation is seldom possible

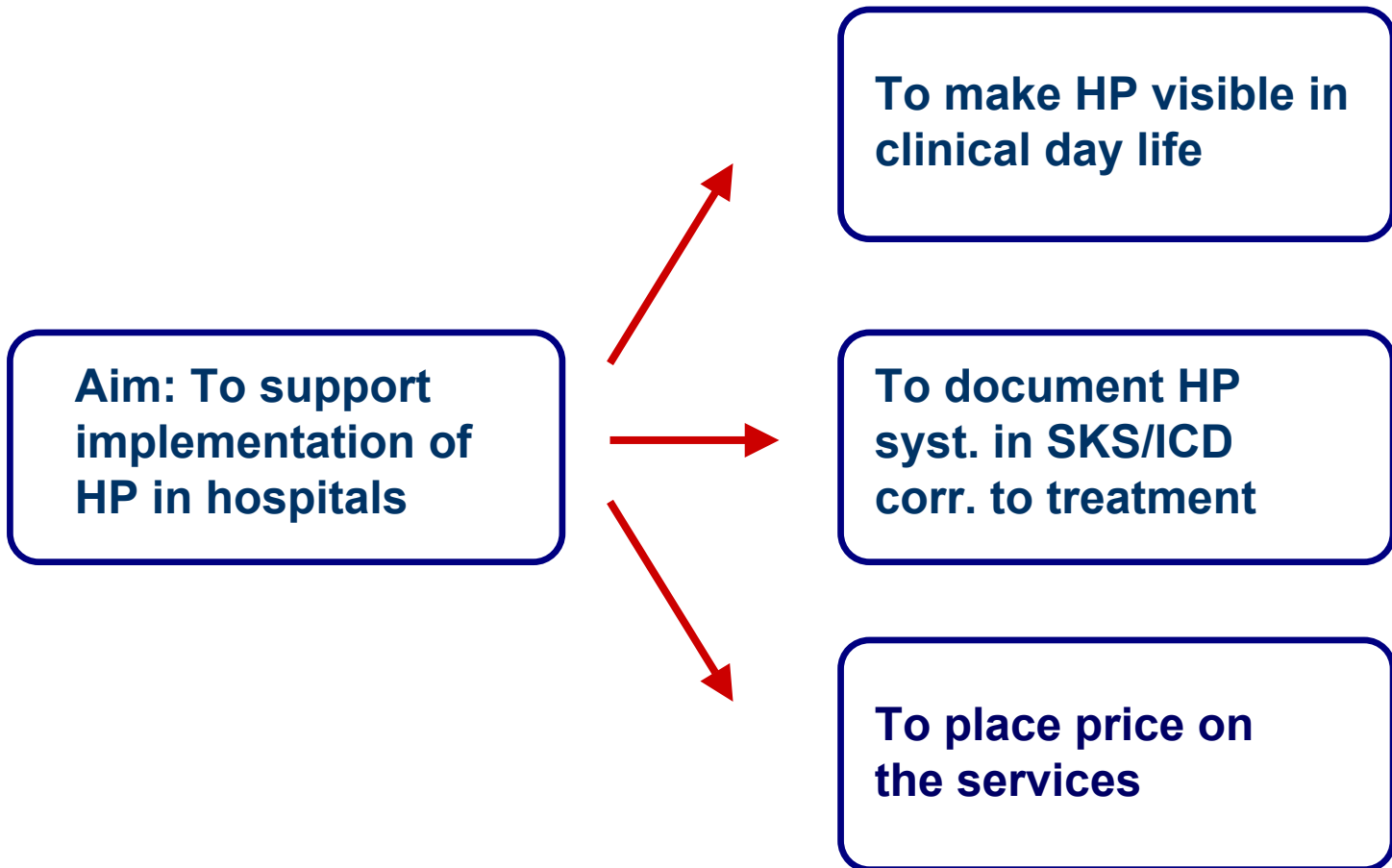
- Few / non-systematic codes in SKS/ICD & DRG

Priority of resources is difficult

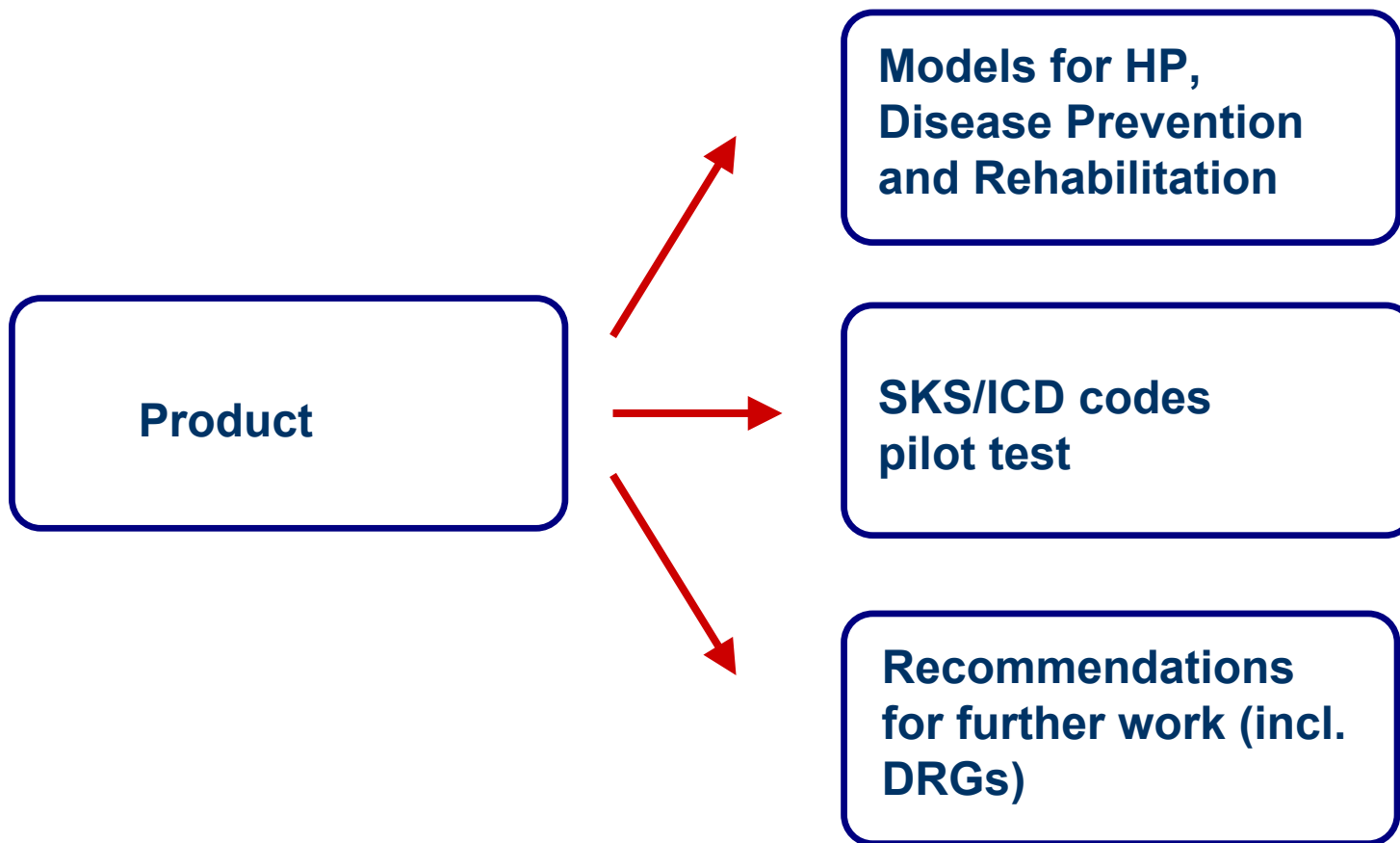




# Purpose

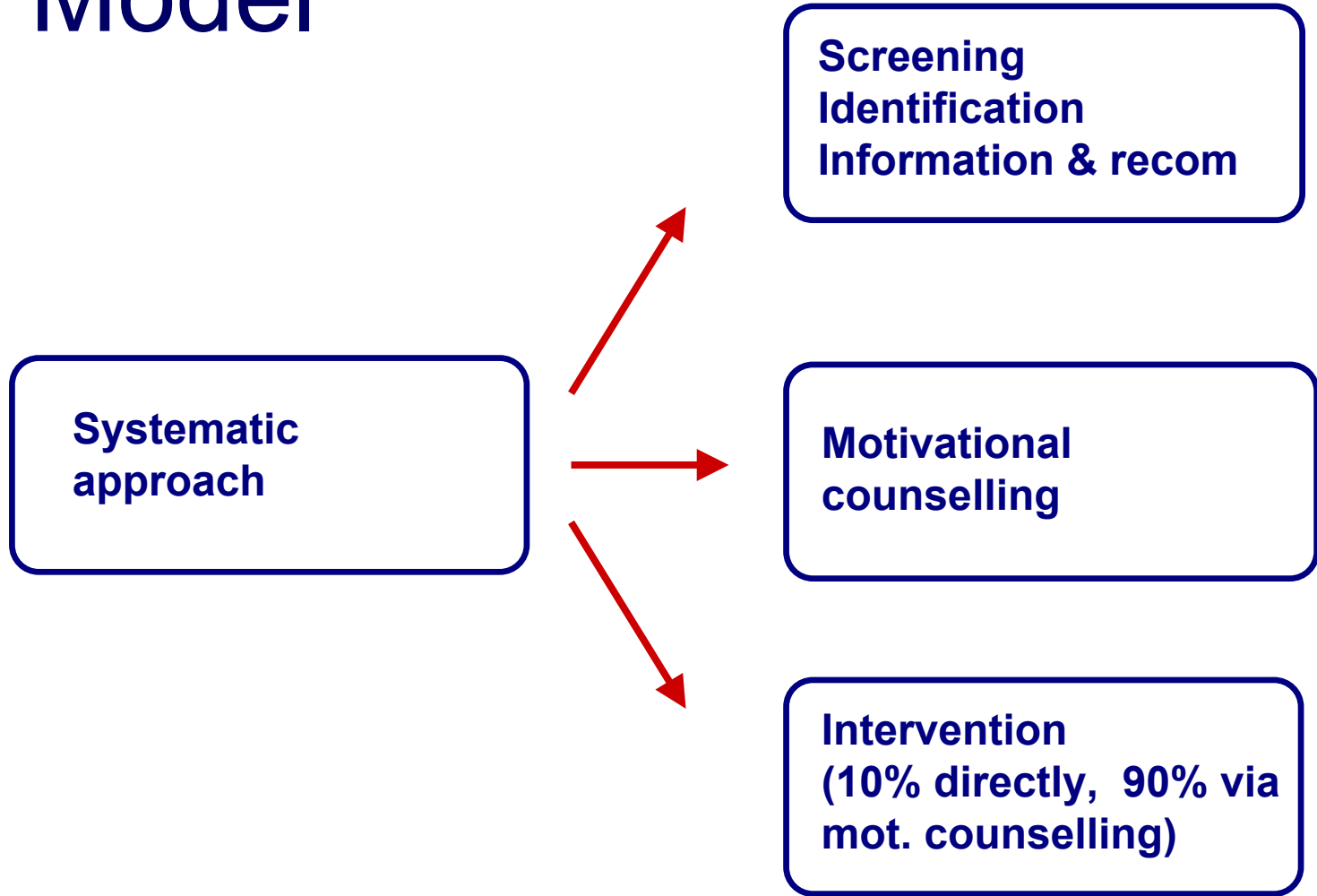


# Expected outcome



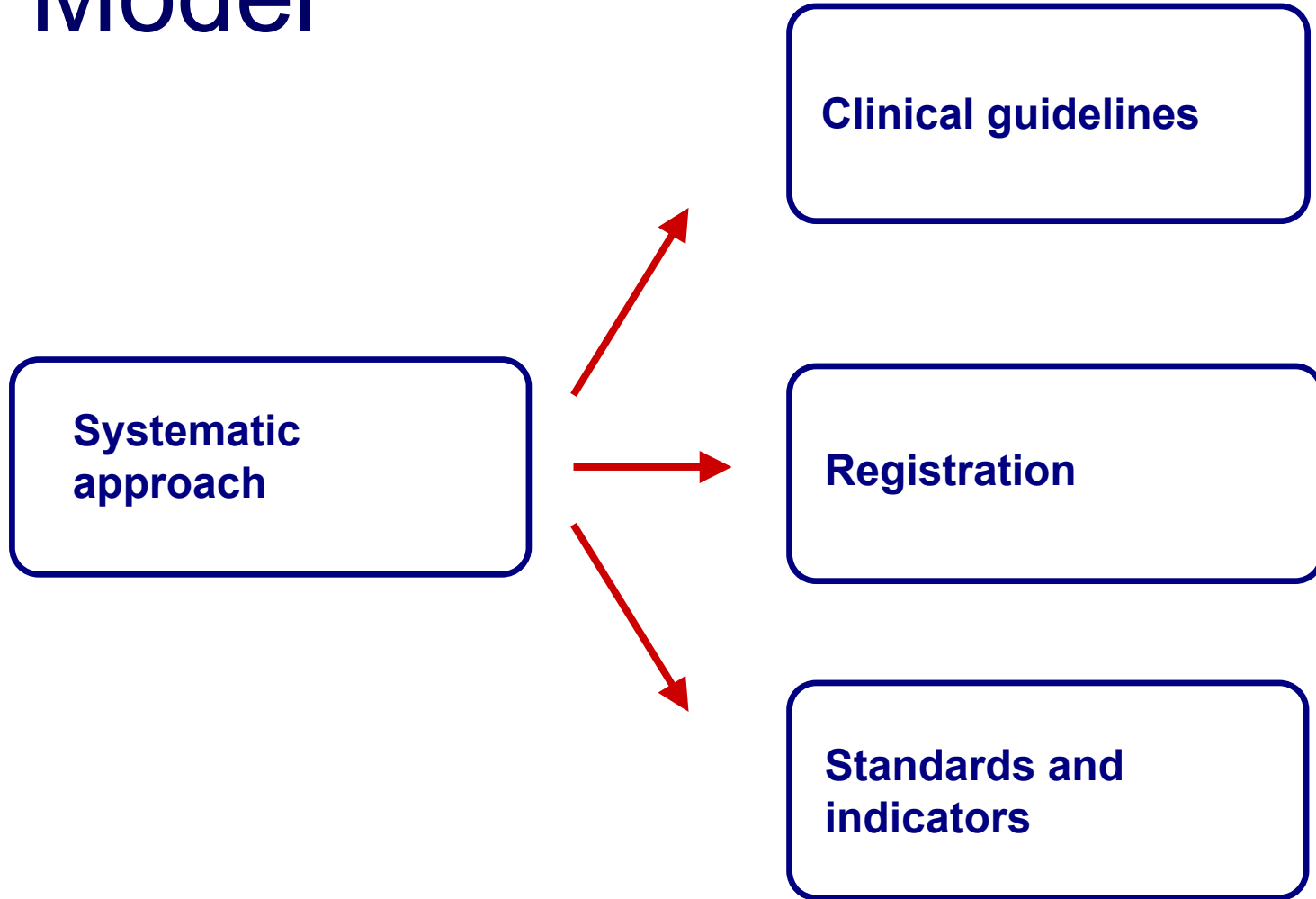


# Model





# Model





# Model: Common elements

## Motivation

- Diet and nutrition
- Tobacco
- Alcohol
- Physical activity
- Psychosocial support

## Intervention

- Diet and nutrition
- Tobacco
- Alcohol
- Physical activity
- Psychosocial support
- Medical optimisation
- Patient education



# Consensus

No clinical tradition for coding HP

Current code system is insufficient regarding HP

Systematic approach to HP required

- Separated registration in SKS/ICD and in DRG
- Registration independent of in- or out-patient status

Codes for procedures instead of diagnoses

Visible and simple codes (> 45.000 other codes)

Necessary to distinguish between

- Motivational counselling and concrete intervention



# Model: Chapter F in SKS/ICD

## Motivational counselling

Tobacco	FM 01
Alcohol	FM 02
Diet and nutrition	FM 03
Physical activity	FM 04
Psychosocial support	FM 05
Other	FM 06
----	
Integrated counselling	FM 09
(more elements at the same time)	



# Model: Chapter F in SKS/ICD

## Intervention / Rehabilitation

Tobacco FI 01

Alcohol FI 02

Diet and nutrition FI 03

Physical activity FI 04

Psychosocial FI 05

Medical optimisation FI 06

Patient education FI 07

Others FI 08

----

Integrated rehab. FR 09

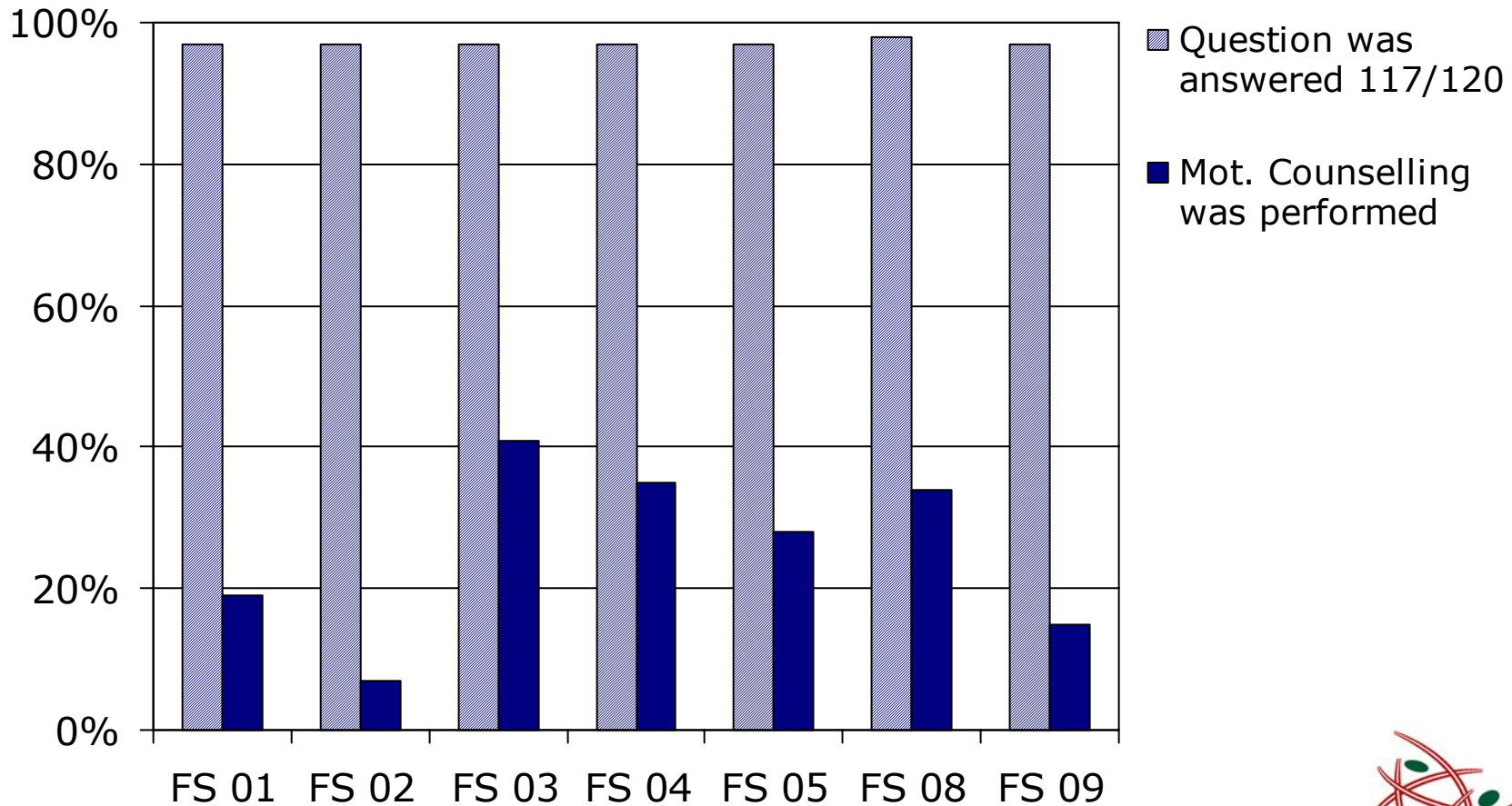


# Pilot test of SKS/ICD-codes

- **Internal Medicin, Farsø Hospital**  
(Troels Kristensen, MD)
- **Cardiac Dept. Bispebjerg Hospital**  
(Anne Merete Soja, MD, PhD-stud)
- **Cardiac-Thoracic Dept. Aalborg Hospital**  
(Astrid Lauberg, RN)
- **Paediatric Dept. Odense University Hospital**  
(Dina Cortes, MD, PhD)
- **Geriatric Dept. Rudkøbing, Hospital Fyn**  
(Lene Lenz, RN)
- **Dept. Preventive Medicine, RAS Køge**  
(Anne Myller, MD)

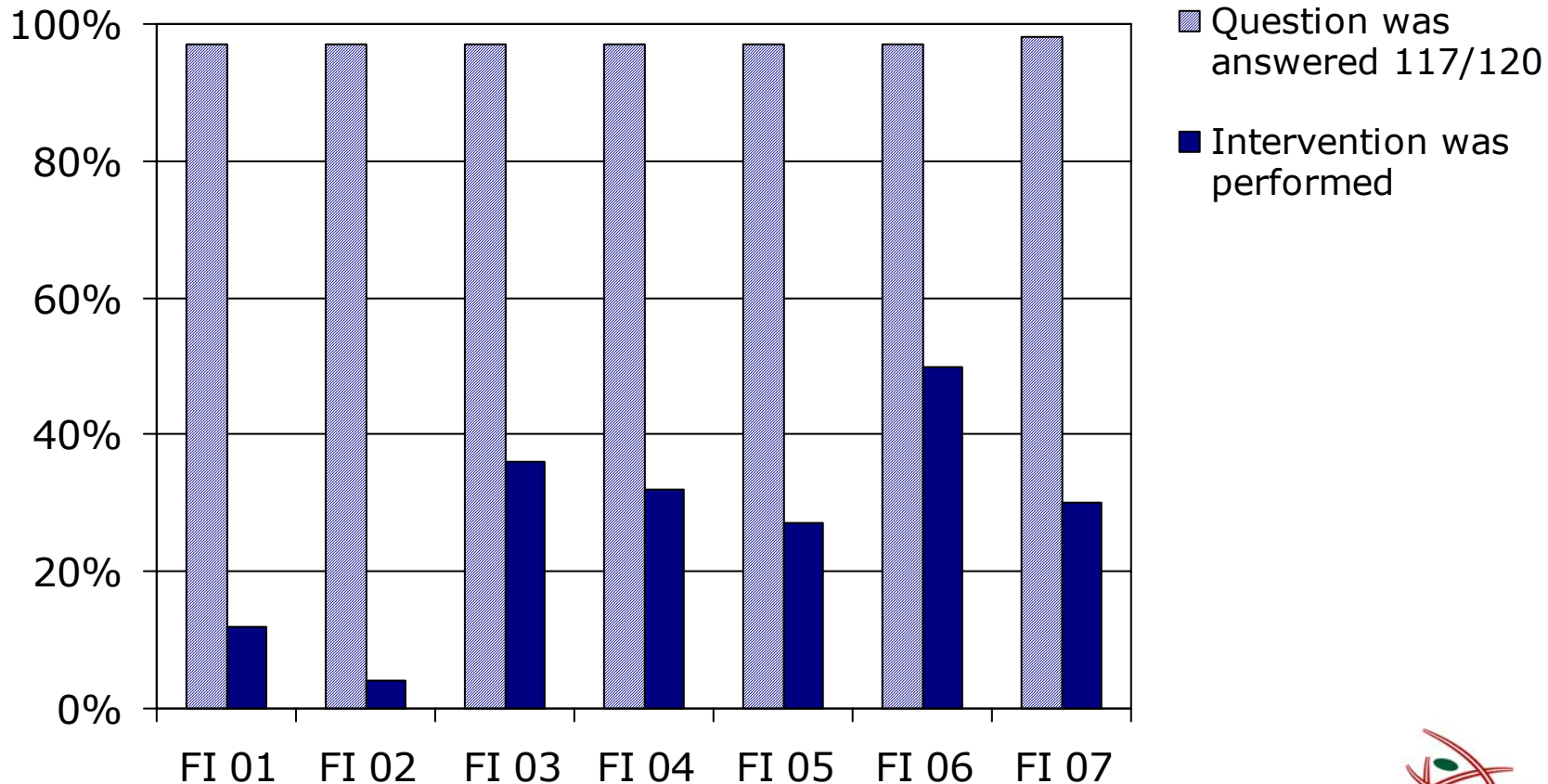


# Motivational counselling: "Is the activity performed?"

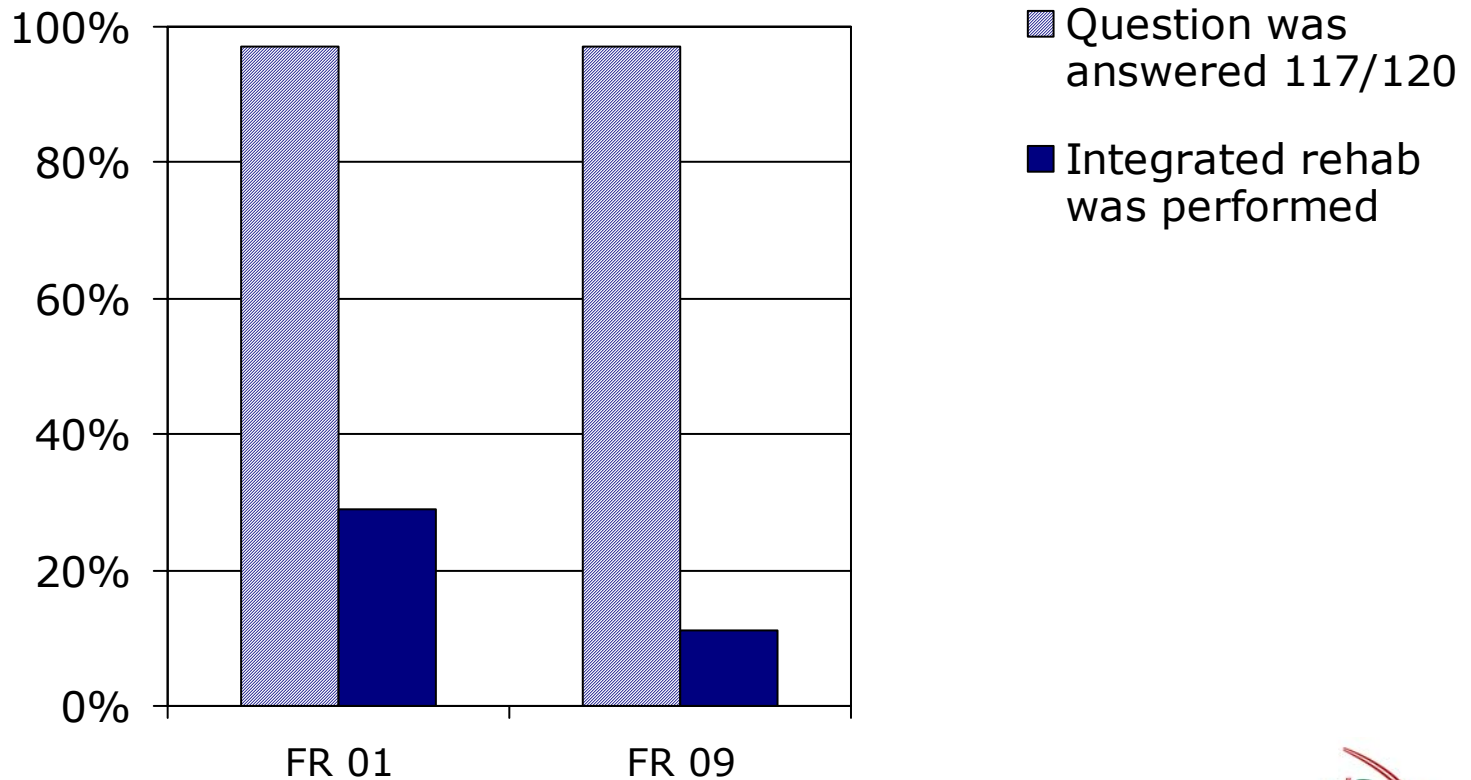




# Pilot: Intervention - "Is the activity performed?"



# Integrated rehabilitation: "Is the activity performed?"



# Pilot comment: minimum criteria

Motivational counselling reg. tobacco:

Based upon a documented history of:

- Daily use
- Dependence (Fagerstrom score)
- Stage of change

The health professional gives:

- Individual information, feed-back, advises & recommendation
- Folder or other information material
- Admittance to stop smoking program





# Limitations

- Time-consuming registration
- Introduction of new traditions
- Difficulties in pricing all HP services
- "Over-coding"
- Controlling delivery of services instead of quality of care achieved





# Strengths

- Facilitating implementation of HP
- Connecting to all other SKS/ICD codes and DRG-system
- Monitoring HP services in hospital
- Indicators for HP services, thus linking to the WHO standards for HP in hospitals
- Simple model respecting the systematic approach
- Useful at pilot test (117/120 cases)





# Next step

- ✓ National pilot test
- Adjustment (incl. minimum criteria)
- Report
- Placing DRG code and price
- Cont. evaluation in the common DRG-program
- International working group should consider development of an international strategy

